



# NL Sustainable Drinking Water Research for Rural, Remote, and Indigenous communities

## MNL Symposium & AGM

### May 7, 2021

### 10:30-11:00am NDT



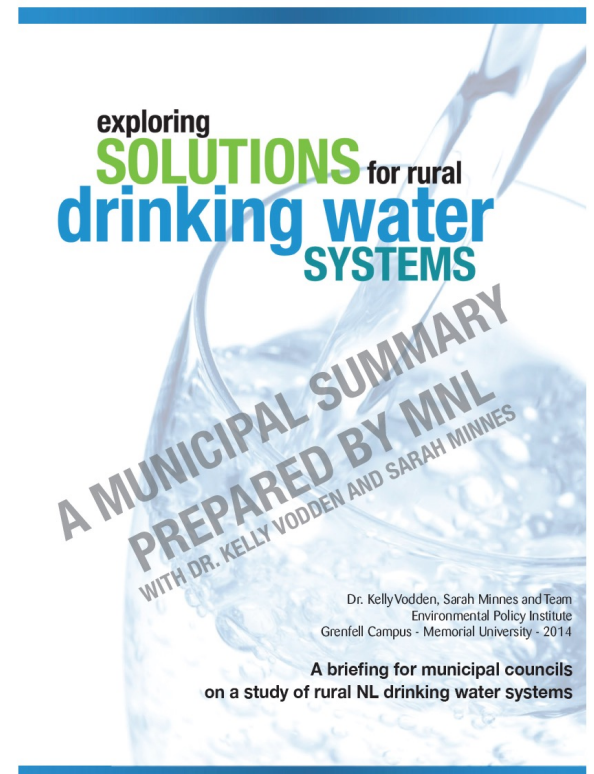
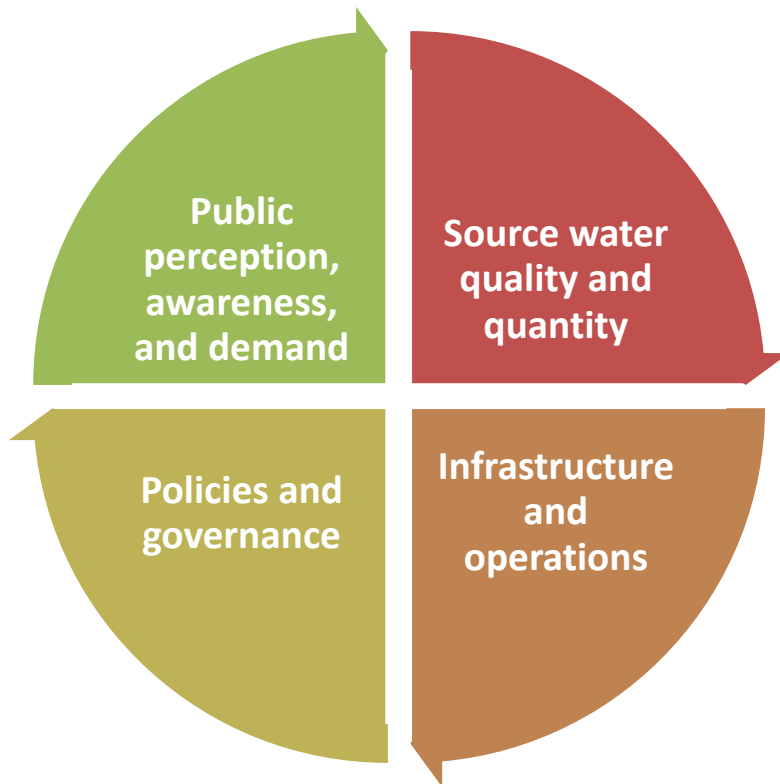
GRENFELL  
CAMPUS



UNIVERSITY  
OF GUELPH

exploring **SOLUTIONS** for rural  
**drinking water SYSTEMS**

# EXPLORING SOLUTIONS FOR SUSTAINABLE RURAL DRINKING WATER SYSTEMS



For more information and the final  
report  
see: <http://nlwater.ruralresilience.ca>

exploring **SOLUTIONS** for rural  
**drinking water** SYSTEMS

# Further Research

- **Helping Municipalities Find Solutions for Sustainable Drinking Water Systems** (Sarah Minnes, and Kelly Vodden, 2015)
- **A Regional Approach to Drinking Water Management: NL-BC Comparative Water Systems Study** (Sarah Breen , Sarah Minnes, and Kelly Vodden, 2015)
- **Sunnyside Drinking Water Project** (Jennifer Daniels and Kelly Vodden, 2016)
- **Source Water Protection and the Policy Implementation Gap** (Seth Eledi, 2015-2108)
- **Drinking Water Challenges and Solutions in Indigenous Communities: The case of Flat Bay, NL** (Ayotunde Omosule, 2016-18)
- **Black Duck Brook-Winterhouse Drinking Water Survey** (Seth Eledi, Kelly Vodden, Wendy Brake, 2016)
- **Exploring Regional Approaches to Drinking Water Management in the Strait of Belle Isle** (Vincent Chireh and Kelly Vodden, 2016-18)
- **Rural Drinking Water Systems and Multi-level Governance** (Rumbidzai Kanyangarara, 2016-)

***Exploring Water  
Insecurity in Rural and  
Remote Areas During a  
Pandemic:  
Experiences with Potable  
Water Dispensing Units  
(PWDUs) in  
Newfoundland and  
Labrador***



Photo: Postville PWDU



## Interviews

- **32** communities with PWDUs
  - **21** interviews across **15** communities

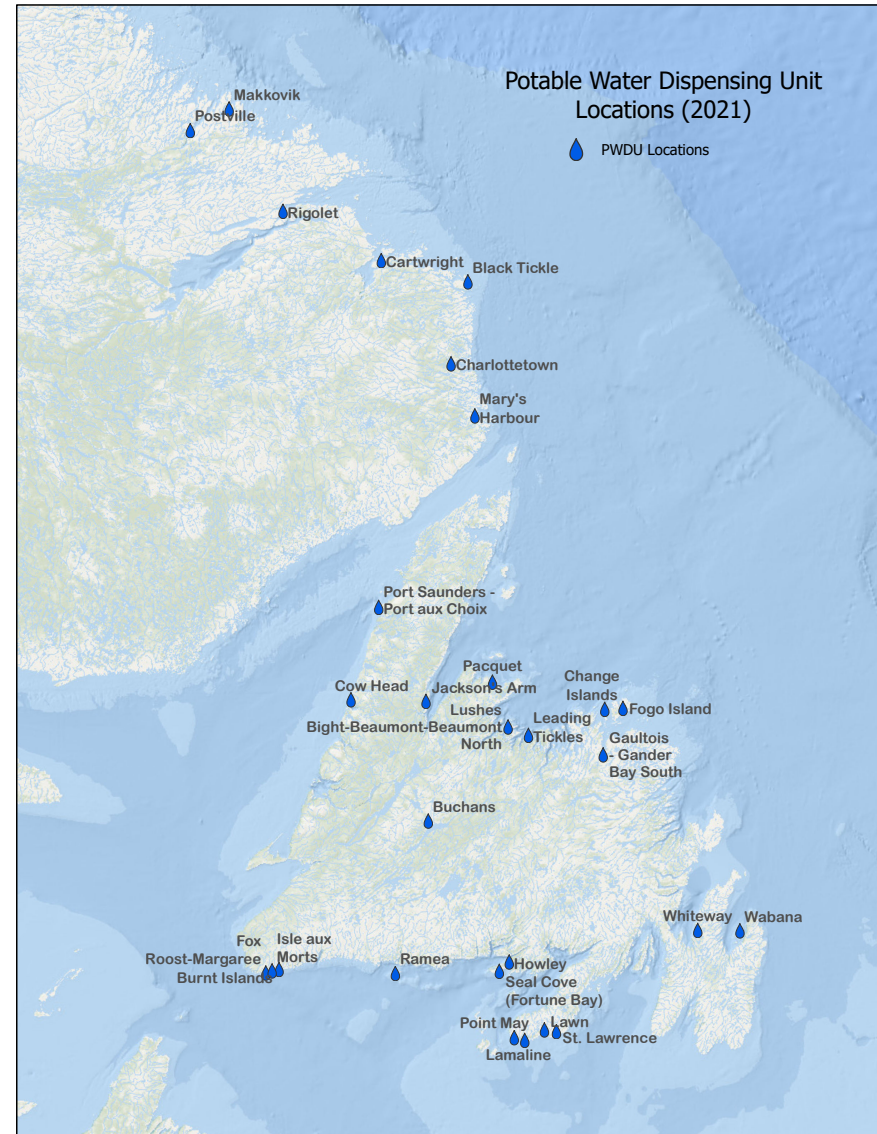


## Analysis: major themes



## Community Feedback Webinar

- **12** participants
  - across **9** PWDU communities
- **+ 8** Partners
- **+ 1** Expert



May by NCC, 2021

# Preliminary Findings

*“If you've visited one rural town, the saying goes, you've visited one rural [or remote] town—no two are the same”*

*A. Hutchins in Maclean's*



Photo: Black Tickle PWDU



Benefits	Challenges
<ul style="list-style-type: none"><li>• Good source of approved drinking water<ul style="list-style-type: none"><li>• Addresses boil water advisories</li></ul></li></ul>	<ul style="list-style-type: none"><li>• Still access issues in some communities for certain demographics</li></ul>
<ul style="list-style-type: none"><li>• Reasonable cost to users</li></ul>	<ul style="list-style-type: none"><li>• Can be expensive at the community/municipality level (high initial cost of unit)</li><li>• Upkeep and maintenance costs every year to the town</li></ul>
<ul style="list-style-type: none"><li>• Maintainable by communities</li></ul>	<ul style="list-style-type: none"><li>• Not all communities have trained/certified operators or people for maintenance issues</li><li>• Service interruptions</li></ul>
<ul style="list-style-type: none"><li>• Reduce dependence on single use bottles/plastics<ul style="list-style-type: none"><li>• An alternative and a choice</li></ul></li></ul>	<ul style="list-style-type: none"><li>• Need for improved communication (e.g. guidelines, benefits, safety, etc.)</li></ul>



## **PWDU**

## **Full Scale Treatment Plant**

### **Construction of Unit**

**\$150 – 350K  
(<\$800K)**

**\$1.5-2 Million**

### **Annual operating and maintenance**

**\$2-10K**

**\$50-100K**

# Maintenance and Operations

- Parts
- Power outages or surges
- Leaks
- Demand beyond capacity
- Remote/Rural-ness
  - Waiting for parts
  - Sending out tests



Photo: PWDU system Rigolet



# COVID – 19

- Guidelines?
- Increased demands
- Hours of operation
- Delay for new PWDUs
- Cancellation of operators training
- Emergency drinking water flown-in

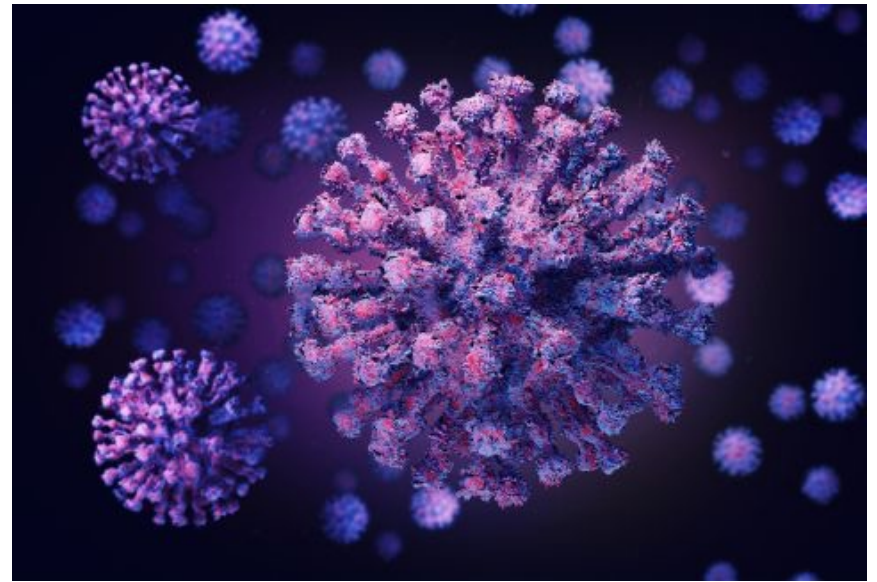


Photo: [livescience.com](https://www.livescience.com)

# Opportunities

- Remote support network
- Water delivery services
- Preventative maintenance
- Backup generators

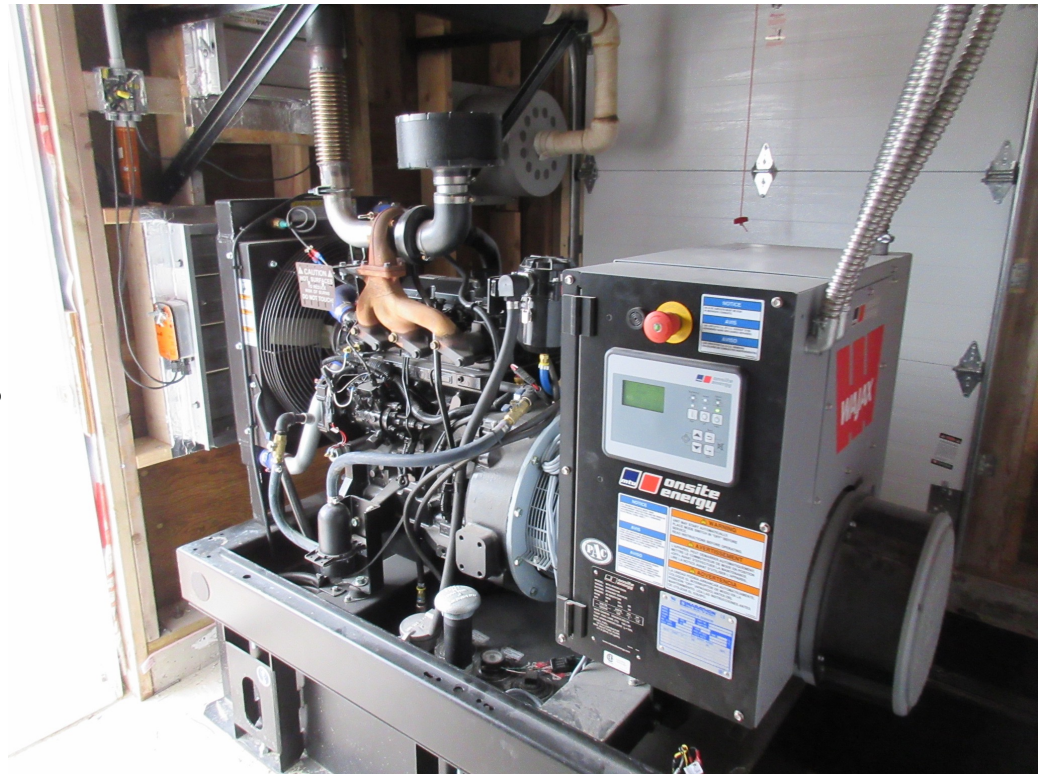


Photo: Back up generator in Makkovik

# PWDUs: A spectrum of solutions

**Permanent**  
(e.g., to address  
BWA and access  
issues)

**Short-term, interim  
and temporary**  
(e.g., until a full  
system is installed)

**Supplemental**  
(e.g., contingency or  
emergency source,  
economic development  
and tourism)



*"This is something we are  
going to have to continue  
long term"*

Community #7, 2020

*"I see this now as part of my  
contingency plan moving  
forward"*

Community operator, 2021

- *Do PWDUs fit in with the vision of water security in your community?*
- *Are we supporting communities to solve their water security issues? How?*



Photo: TerraNova Water Services

**Thoughts? Questions? Please contact us at:**

Research - related : [seger@mun.ca](mailto:seger@mun.ca)

Member - related: [DWalsh@municipalnl.ca](mailto:DWalsh@municipalnl.ca)

**For more information and resources see: <http://nlwater.ruralresilience.ca>**